

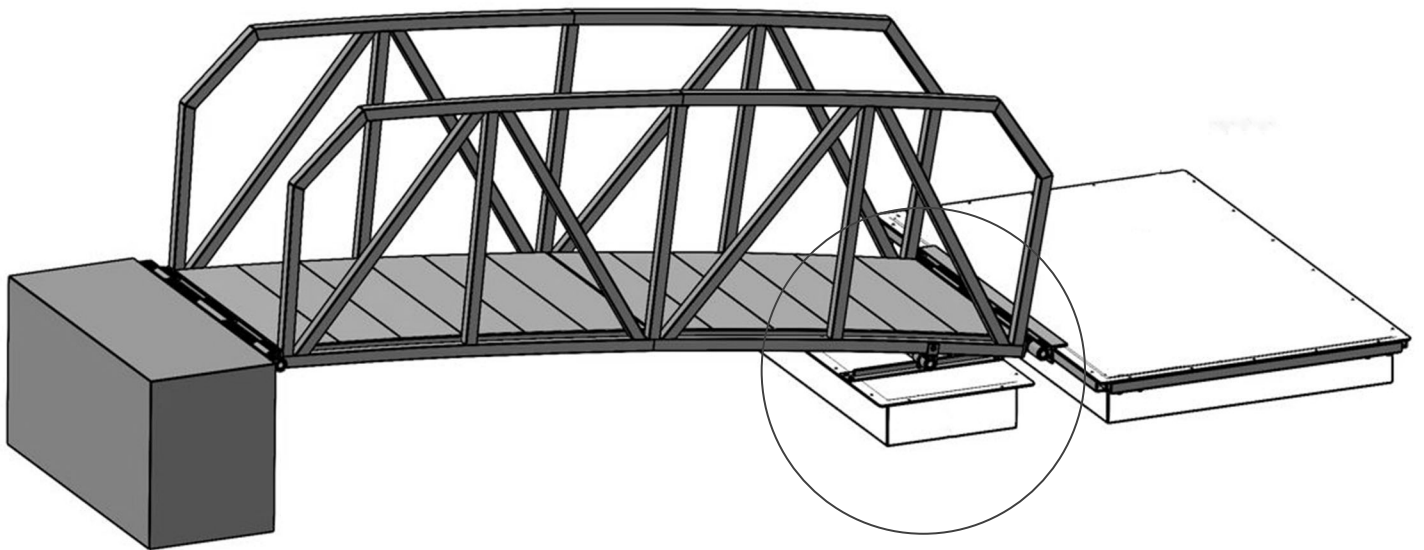


ADDITIONAL FLOAT INSTALL INSTRUCTIONS PAGE DIRECTORY

COMPENSATION FLOAT	1-12
SHOE FLOAT	13-18



INSTALLATION INSTRUCTIONS



Compensation Float

*Every project is unique. Design and attachment may vary per project.

BEFORE INSTALLATION

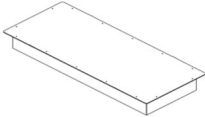








Thank you for your purchase with AccuDock. Our products have been constructed for durability and designed for easy installation. Please take the time to read these instructions carefully before installing your attachment.

Check your package carefully to ensure you have all parts and hardware listed below. Should you be missing any of the hardware please contact us.

PARTS LIST

While unpacking, please be sure to not discard any of the parts. Set them aside on a flat surface and ensure all parts are present prior to installation.

Note: The Float Mounts are not listed below as they are pre-installed on the Compensation Float.

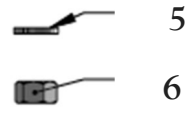
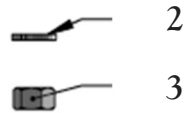
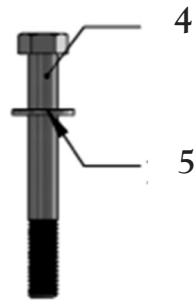
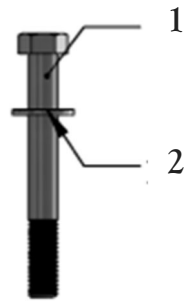
Part	Qty	
Compensation Float (GAN-COH)	1	
Angle Mount	2	
PVC Hinge Pipe and Aluminum Hinge Pipe	1	
1/4" Hex Bolt	2	
1/4" Washer	4	
1/4" Hex Nut	2	
5/16" Hex Bolt	2	
5/16" Washer	4	
5/16" Hex Nut	2	

TOOLS NEEDED

Cordless Drill with 1/4" and 5/16" Drill Bit

9/16" Wrench (2) and 7/16" Wrench (2)

HARDWARE LIST

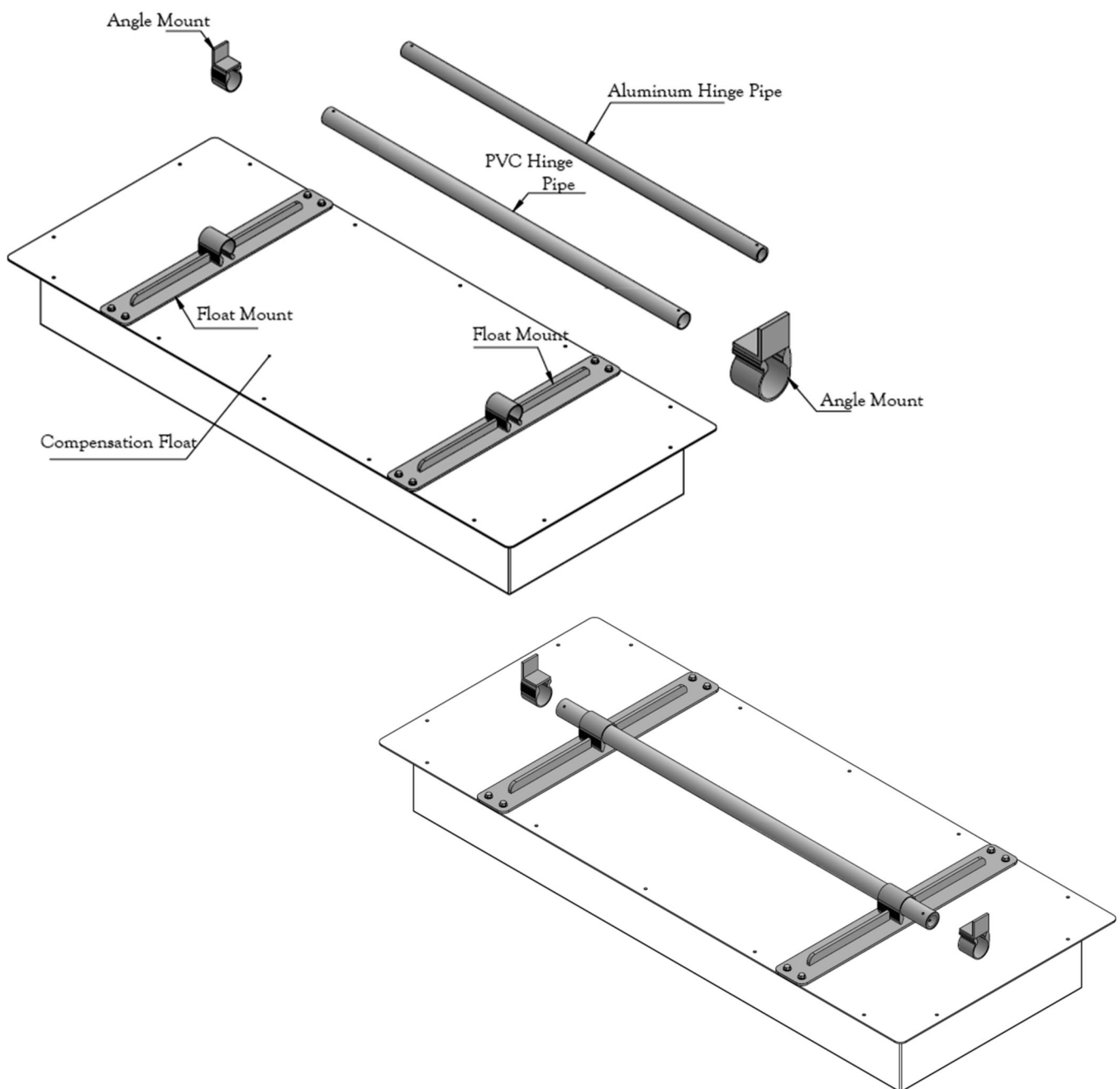


Label	Description
1	1/4" Hex Bolt
2	1/4" Washer
3	1/4" Hex Nut
4	5/16" Hex Bolt
5	5/16" Washer
6	5/16" Hex Nut

STEP ONE

First, insert the Aluminum Hinge Pipe and PVC Hinge Pipe through the pre-installed Float Mounts. The Aluminum Hinge Pipe is placed into the PVC Pipe and then inserted through the Float Mounts combinedly. Line up the Angle Mounts with the pipes and insert the opening of the Angel Mount onto the pipes.

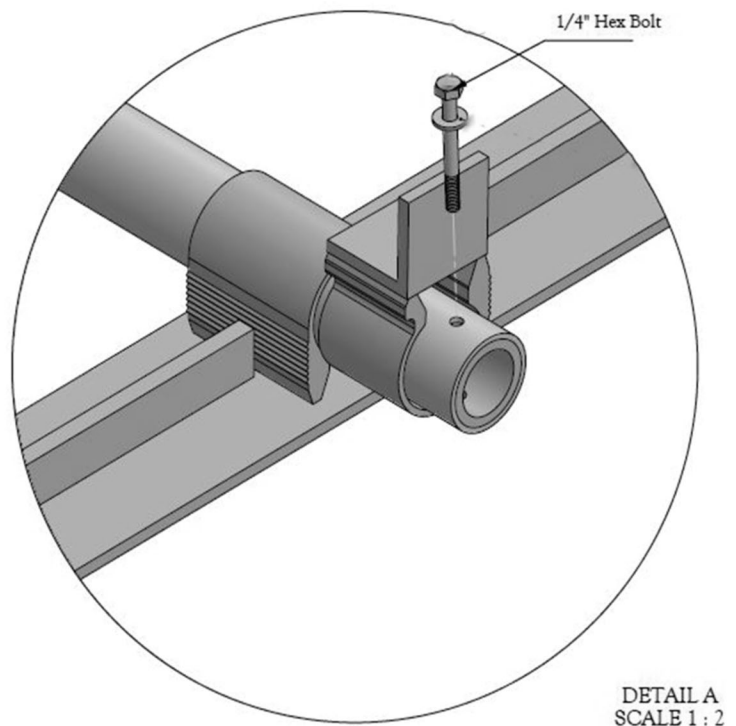
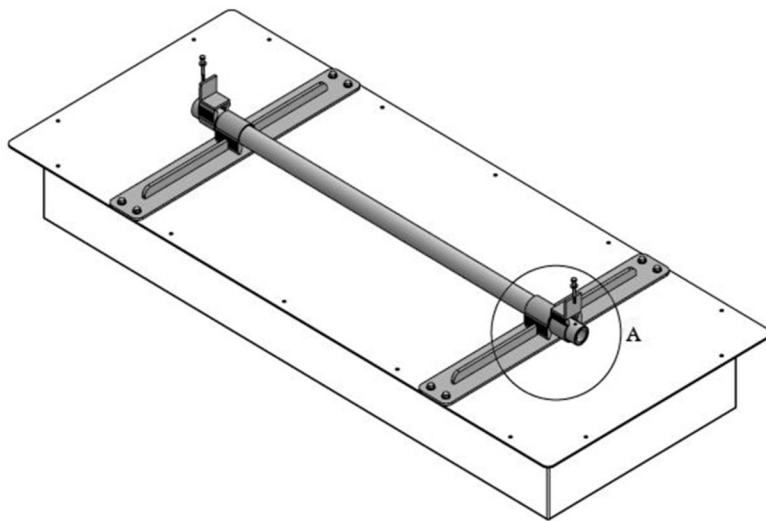
Note: The Aluminum Hinge Pipe, PVC Hinge Pipe and Angle Mounts may arrived pre-installed on the Compensation Float, if so skip steps one and two.



STEP TWO

Next, insert the 1/4" Hex Bolts along with Washers from the top using the pre-drilled holes on the pipes as a guide. Insert the Washers and Hex Nuts from the bottom and secure. See Detail A.

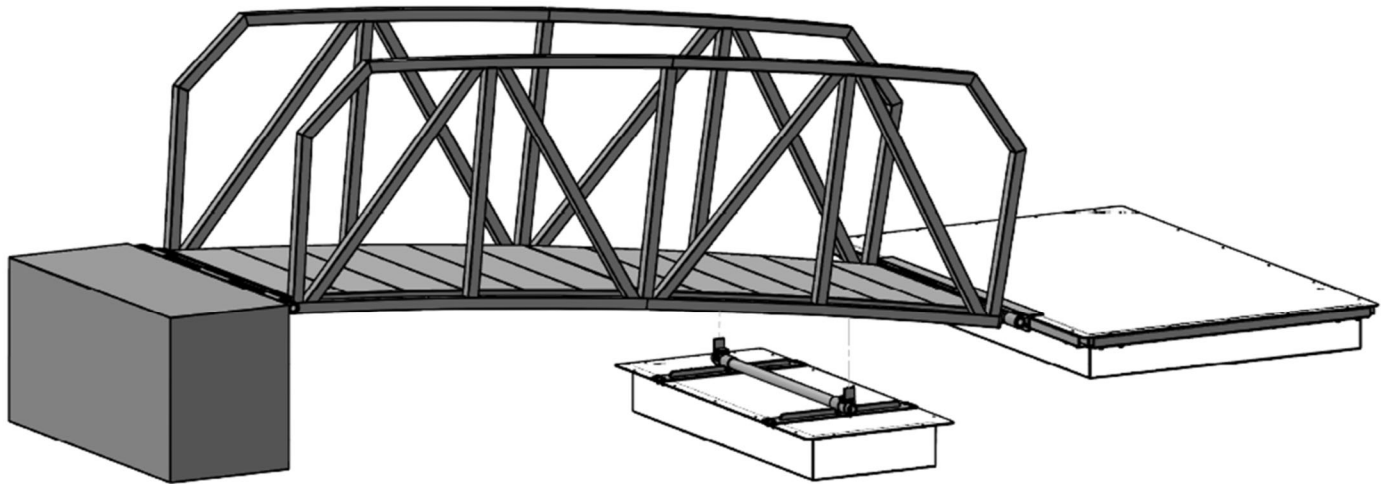
Note: The 1/4" Washers and Hex Nuts used to secure the Hex Bolts can not be seen in the illustration below.



STEP THREE

Next, line up the Angle Mounts located on the Compensation Float with the outer chords of the Gangway.

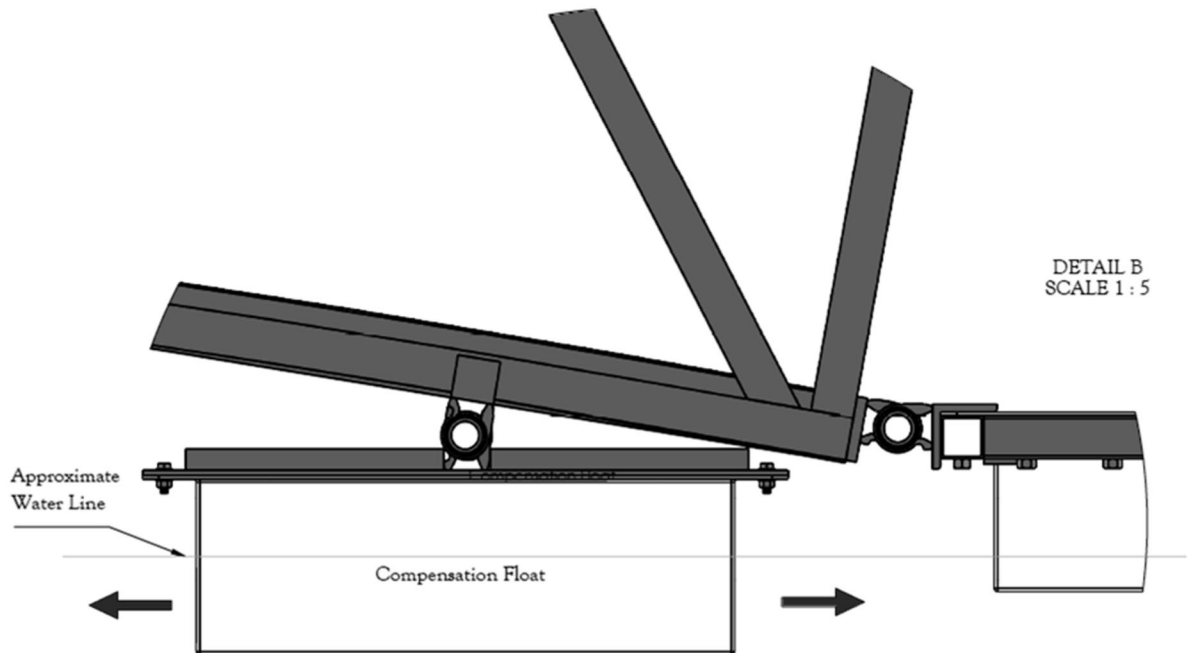
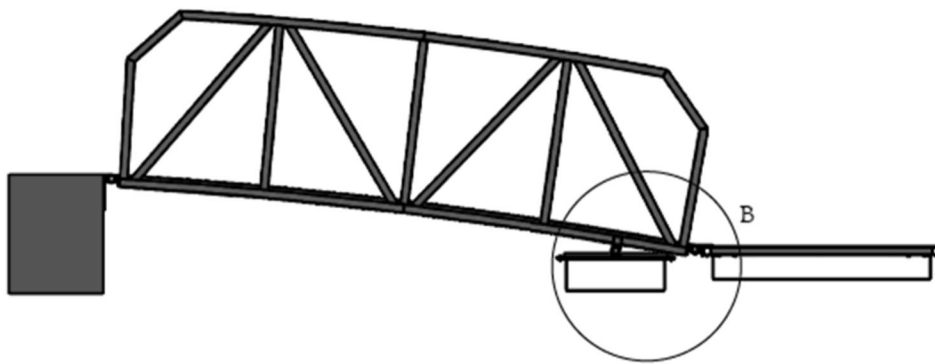
Note: The Angle Mounts may arrive pre-installed on the Compensation Float. Hex Bolts on the Angle Mounts may need to be adjusted before attaching to the Gangway.



STEP FOUR

Continue by determining the desired location for the Compensation Float. See Detail B.

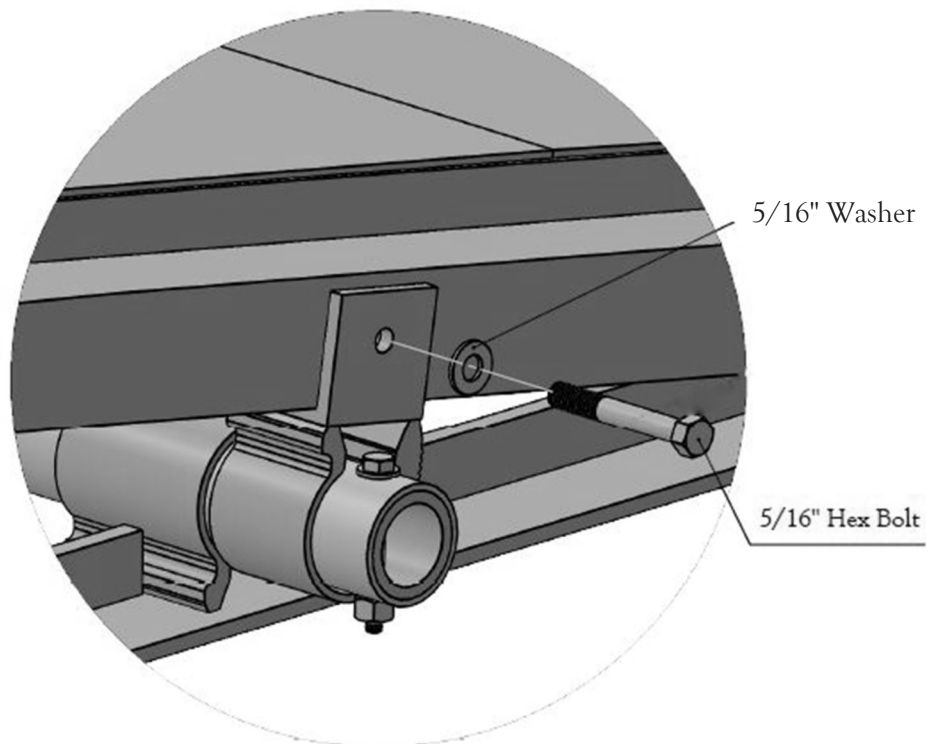
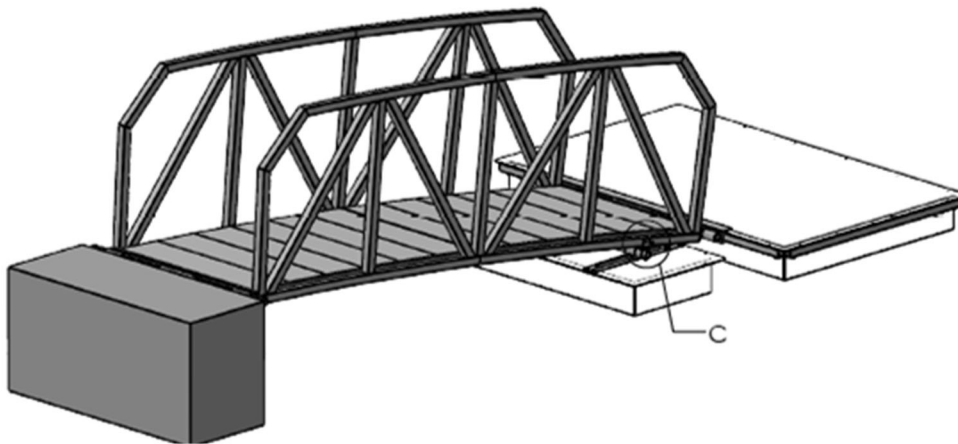
Note: Moving the Compensation Float to the right (towards Floating Dock) will result in a deeper draft which means higher buoyancy. Moving the Compensation Float to the left (towards Gangway) results in a smaller draft which means lower buoyancy.



STEP FIVE

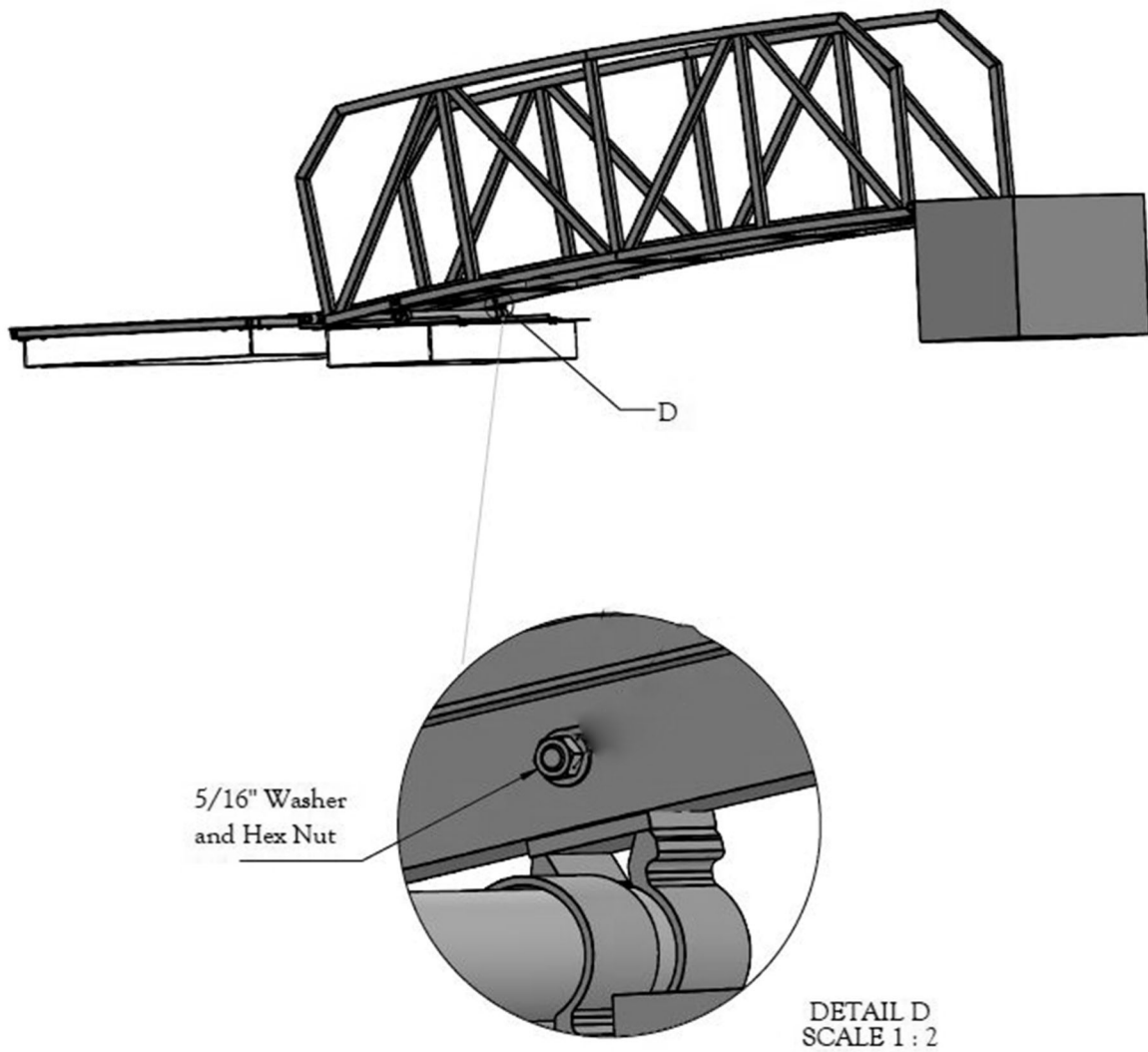
Once the location of the Compensation Float is determined, drill a hole through the Angle Mount and the square tube of the Gangway. Continue by inserting a 5/16" Hex Bolt and Washer through the Angle Mount. See Detail C.

Note: Angel Mounts may arrive pre-drilled if so, you may use the pre-drilled holes on the mounts as a guide to drill through the Gangway.



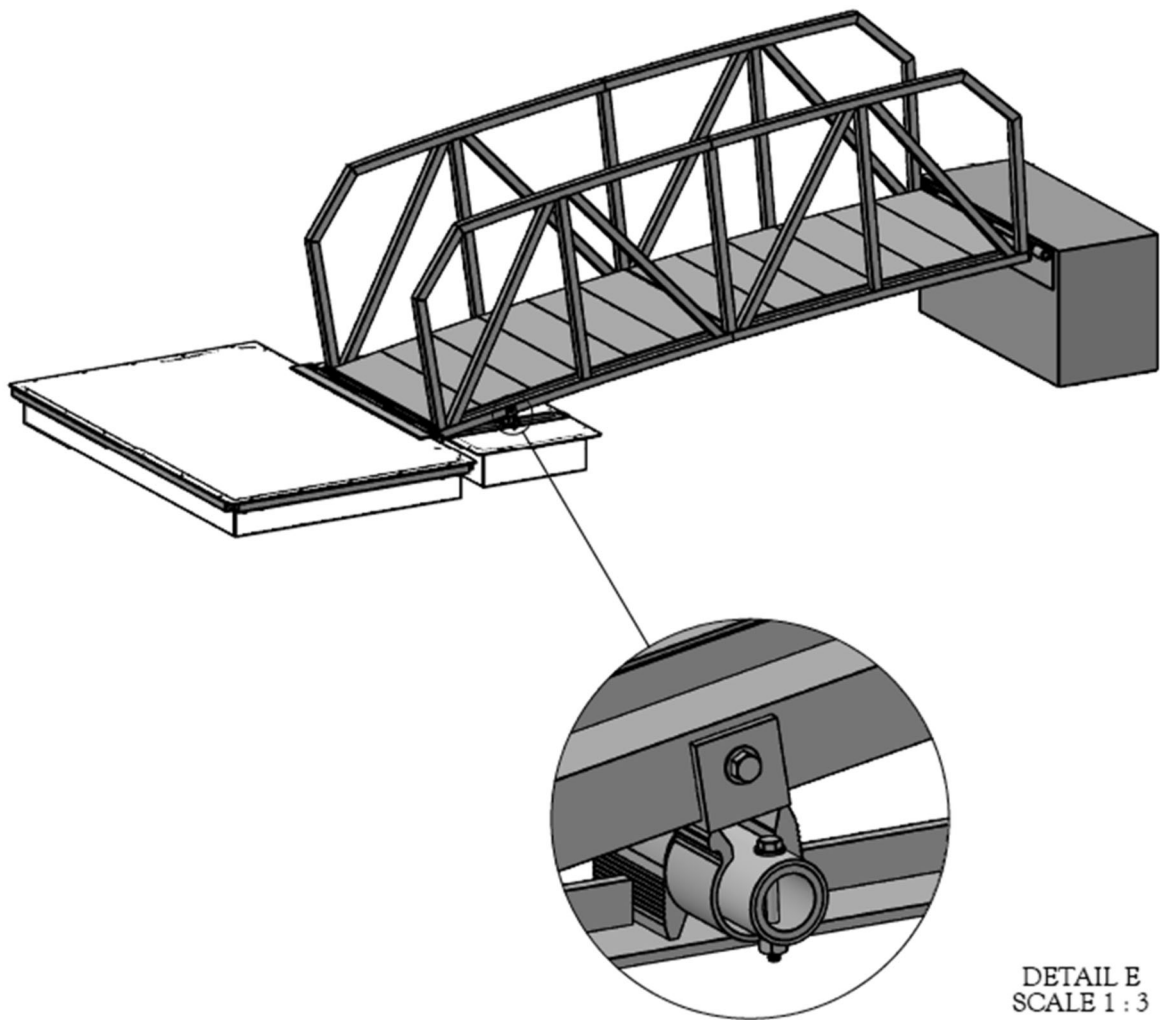
STEP SIX

Next, Insert a Washer and Hex Nut through the inside of the Gangway and secure.
See Detail D.



STEP SEVEN

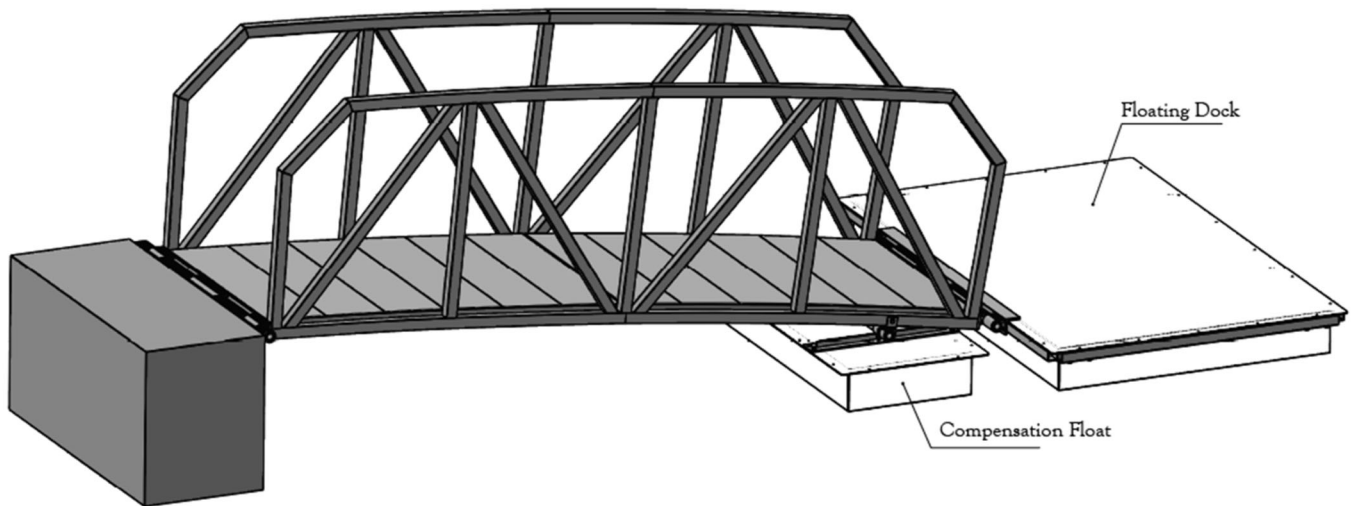
Repeat steps five and six on the Angle Mount on the other side of the Gangway. This includes drilling a hole through the Angle Mount and the square tube of the Gangway and inserting the 5/16" hardware. See Detail E.



STEP EIGHT

Once the Compensation Float is installed, it should fully support the weight of the Gangway so that the Floating Dock is not listing in any direction. If the Floating Dock is listing, the Compensation Float may have to be moved to adjust its draft.

Note: In most cases the edge of the Compensation Float will line up with the edge of the Gangway.

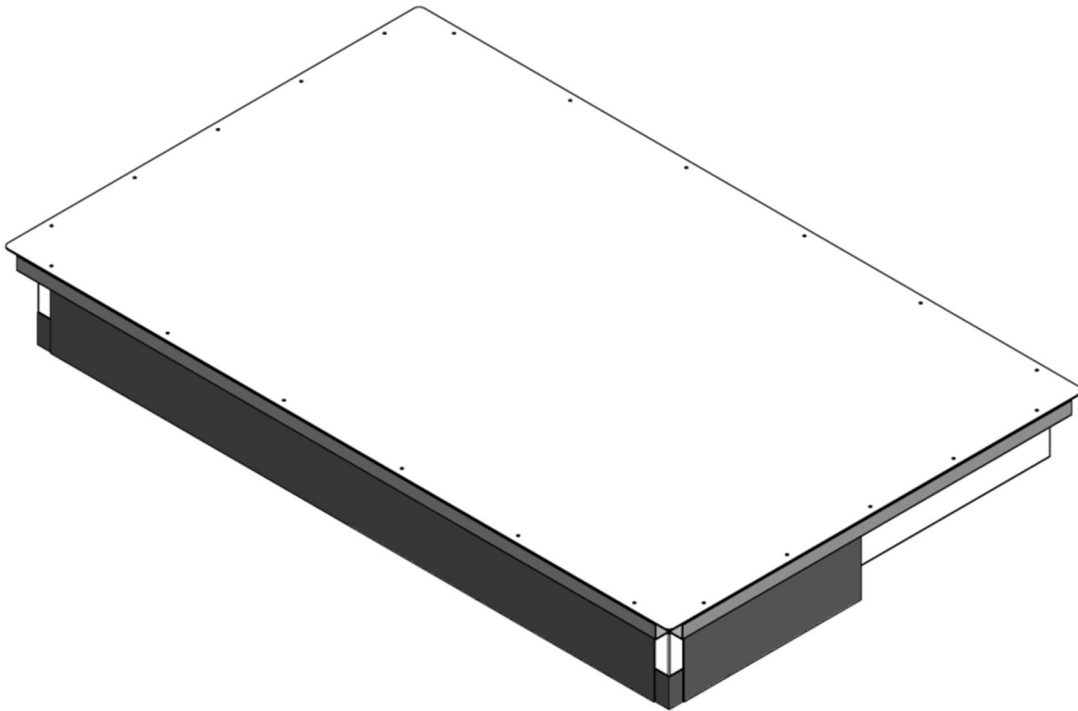




FOR MORE INFORMATION CALL 954.785.7557 OR
EMAIL SALES@ACCUDOCK.COM
WWW.ACCUDOCK.COM



INSTALLATION INSTRUCTIONS



Shoe Float

*Every project is unique. Size and suggested location will vary per project.

Shoe Float is illustrated in dark grey for clarity purposes.


BEFORE INSTALLATION

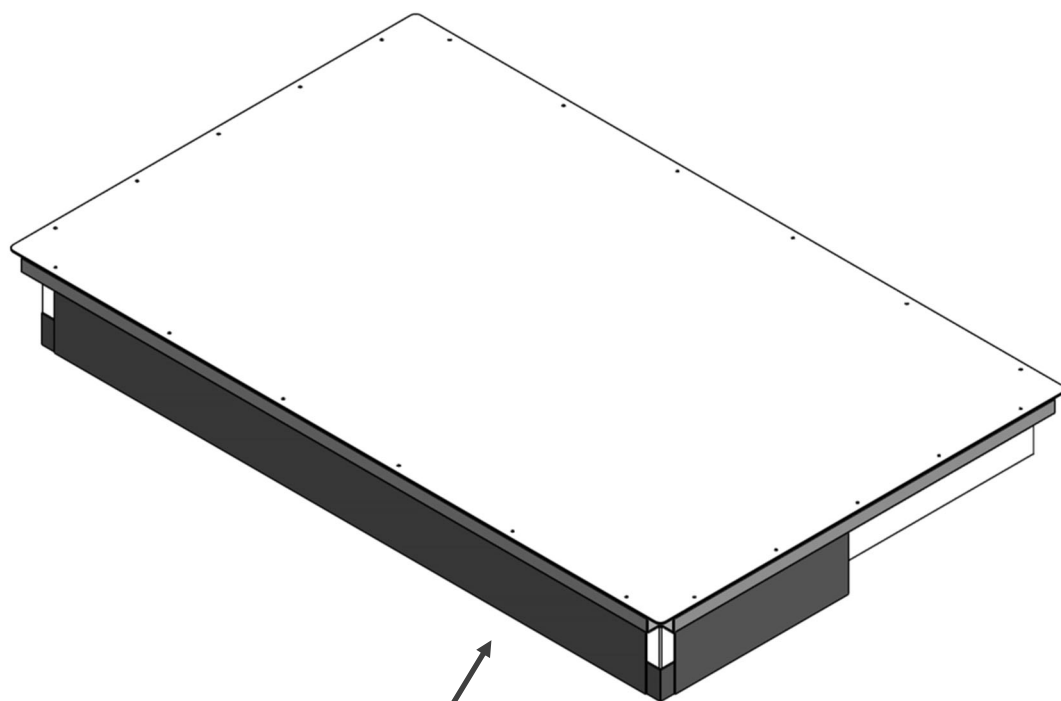
Thank you for your purchase with AccuDock. Our products have been constructed for durability and designed for easy installation. Please take the time to read these instructions carefully before installing your attachment.

PARTS LIST

While unpacking, please be sure to not discard any of the parts.

Note: Shoe Float is illustrated in dark grey for clarity purposes; anything shown in green is one part.

Part	Qty	
Shoe Float (ACC-SHOE)	1	

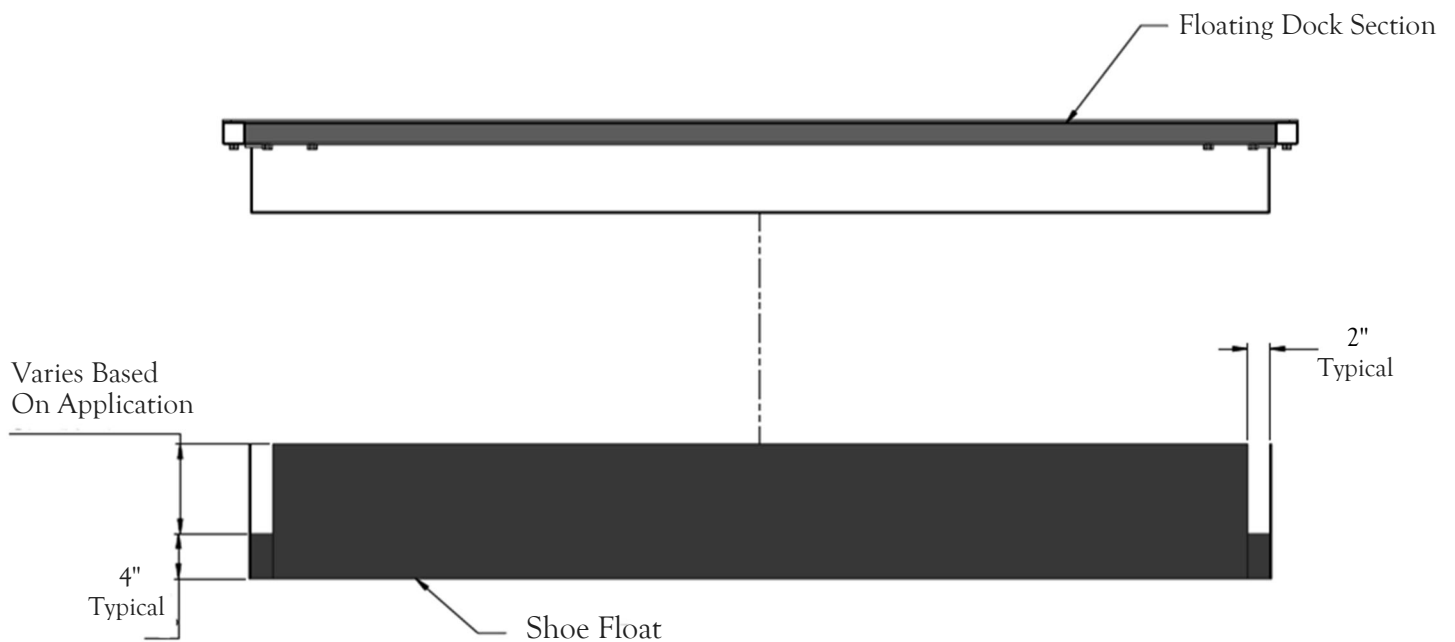


Shoe Float

STEP ONE

First, align the Shoe Float with the floating dock section. Ensure that the Shoe Float is the same size as the dock section that it will be installed on.

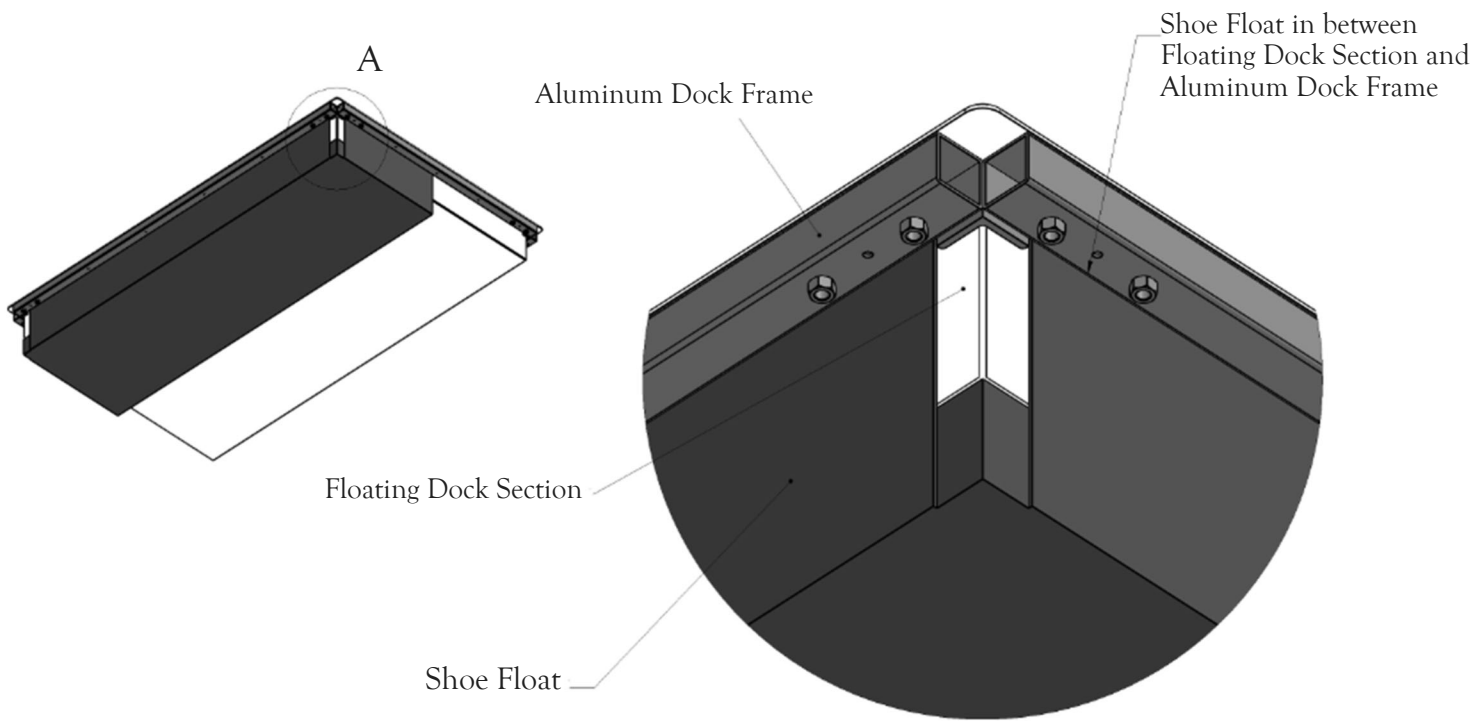
Note: The 2" gaps in the extended walls of the Shoe Float provide clearance for the structural angles which are welded-in at the corners of the aluminum dock frame on the floating dock section once installed.



STEP TWO

Lastly, push the Shoe Float in place so that the three walls of the Shoe Float are installed between the sidewall of the floating dock section and the aluminum dock frame. See Detail A.

Note: The buoyant force will push upward on the bottom of the Shoe Float when installed on the water, coupled with the downward force from the load (dead load/live load) acting on the floating dock and allowing the Shoe Float to fully secure.



Detail A
Scale 1:3



FOR MORE INFORMATION CALL 954.785.7557 OR
EMAIL SALES@ACCUDOCK.COM
WWW.ACCUDOCK.COM